

M.A.Mills

Funeral Service

Incorporating

William Roberts & Sons of Bottesford



Independent Funeral Directors

- | Private Chapel of Rest
- | Monumental Masons
- | Pre-Paid Funeral Plans
- | Horse Drawn Carriages

Proprietors
Michele & Anthony Mills

Tel: 0115 933 6906

36-38 Main Road, Radcliffe on Trent NG12 2AA



M.A.Mills

Funeral Service

Incorporating William Roberts & Sons of Bottesford

Offering a Personal and Traditional Service to all areas at all times

M. A. Mills Funeral Service is a totally independent, family owned and managed funeral service, where all calls and funeral arrangements are personally dealt with by the proprietors. The proprietors, Michele and Anthony Mills, live in the village of Radcliffe On Trent, and believe in offering a personal and traditional service to families in their hour of need. Our office and chapel is conveniently located in the centre of the village of Radcliffe On Trent, with easy access to all local services, including public transport.

All of the staff that are employed by ourselves live within the village of Radcliffe On Trent, and are therefore aware of it's traditions and customs. Our aim is to provide families with the type of personal and caring service that is sadly lacking in today's society. We aim to make sure that all of the funeral arrangements are carried out to the families exact requirements, because every funeral service should be a personal tribute to a loved one. We operate a 24 hour telephone service, and will offer sympathetic help and advice day or night. Our aim as a family owned and run funeral service is to take away as much burden as we possibly can.

We have earned an enviable reputation within the village of Radcliffe On Trent, surrounding areas, and also the rest of Nottingham to provide a first class service, where nothing is to much trouble. Our reputation demands that we give 100% to every family.

Services

Pre-paid Funerals

Pre-Paid funeral plans are becoming increasingly popular with young and old alike. Golden Charter Funeral Plans are one of the largest funeral planning companies in the UK with over 100,000 clients.

Flowers

All our floral tributes are made to the highest quality. Every tribute can be completely personalised to suit your needs, you can change; the colours, the ribbons and even the type of the flowers that are used. If there's anything special that you would like making, i. e something unique like a car, please don't hesitate to enquire.

Masonry

Selecting a suitable memorial is difficult and emotional decision. Should it be your wish to commemorate a loved one by means of a permanent visual memorial our own experienced monumental craftsmen would be pleased to assist and advise you with your choice of design. Please feel free to ask us how and whether a particular design can be modified for you.

Other Services

Placing press notices in the local newspapers. We can at your instruction, place all necessary obituaries into any local newspaper.

Catering requirements before or after a funeral service

We have very good links with a local caterer, and can provide food and drinks (including alcoholic) for as many or as few, as required.

Order of service sheets

We can at your instruction, provide order of service sheets, to include hymns, readings, music etc. Order of service sheets vary in price, but start at £1.50 per copy, with no minimum order.

Horse Drawn Funeral Carriage

We are able at your request, to arrange for a horse drawn funeral carriage to carry a loved one in old fashion style, to the local crematorium or to one of the local cemeteries.

Testimonials

"The support received from Michele and Tony and their team was both very professional and personal. Their caring outlook meant any concerns along the way were handled sensitively. Everything was explained and organised with attention to detail so that the actual day went as smoothly as possible. Thank you."

Rachel Brown

"I can't thank Michele and Tony enough for everything they did when I lost my Dad in August. Michele was so kind and guided me through everything, explaining every step and the staff on the day were lovely."

Nikki Watson

"At a time when we needed them most Michele and Tony were there for us to provide the very personal care for our mum and the support and guidance for us. There was no pressure, just honesty and caring. Their skill and professional behaviour was just right and we knew we could trust them. Thank you Michele and Tony and all your team, with love from Pam Shield and Terry Jones."

Pam Shield

"Michele and Tony have looked after my mum and mum in law in the last few years. They were both so supportive and guided us through every step of the way at such an emotional time. They are so loving and friendly and yet so professional, I would have no hesitation in recommending Michele and Tony to look after your loved ones."

Joy Pugh

"Michele, Tony & their team are amazing. They were there for me every step of the way for my mums funeral. I just walked into their office not knowing what to do next & they took me under their wing & gave my mum such a lovely funeral."

Jo Harvey

"I can't thank you enough for everything you did for us planning mums funeral. At such a sad and scary time you guided us through it all and thank you for the nice chats we had. Not forgetting the thoughtful and caring hugs. I would definitely recommend you. A million stars if I could give that. Thank you again so much. You go above and beyond and much more."

Fiona Proud

"Michele and Tony have arranged several family and close friend's funerals, some at quite a distance. Nothing is too much trouble as they ensure that the funeral is a fitting way to say good bye. Thank you."

Mark Beach

"Tony & Michele were such an enormous help when my father died unexpectedly several years ago. I lived out of the area then & they arranged his humanist funeral with great care taking into account his already prepared plan. They took into account my limited finances & made it a day to remember. I wouldn't hesitate to recommend them."

Alison Hayes

"Picked up my uncles ashes today along with two memory bears. I am so blown away of how soft they are. They are bigger than I thought they are just perfect. He's now home beside me. Can't thank you Michele and Tony for everything, you're just the best."

Michelle Buxton

Procedure To Be Followed After A Death

The Procedure to follow after a death will depend on the circumstances surrounding the death. A Medical Certificate of the Cause of Death must be obtained from a doctor. This Certificate will enable you to register the death and obtain the Death Certificate.

When The Death Occurs At Home

Inform the family Doctor as soon as possible that death has occurred. He or she may write out the Medical Certificate of the Cause of Death upon visiting the home, or request you to attend the surgery for this purpose.

When The Death Occurs In A Hospice Or Nursing Home

The staff of the hospice or nursing home will inform you of the death of your loved one and will help you obtain the Medical Certificate of the Cause of Death. They will also be available to help you with advice until you contact us to make the funeral arrangements.

When The Death Occurs In Hospital

The hospital staff will inform the next of kin or named person of the death. The deceased will be transferred to the hospital chapel. The general office will arrange for the Medical Certificate of the Cause of Death to be issued.

When The Death Is Referred To The Coroner

Sometimes the Coroner will need to be informed when a Doctor cannot issue the Medical Certificate of the Cause of Death. In these circumstances the Coroners Registrars Office will produce a certificate once the Coroner has determined the cause of death. This will be sent by the Coroners Office to the Registrars Office in the district where the death occurred allowing you now to register the death.

Registering A Death

Who may register?

If the person died in a house or a hospital, the death can be registered by:

- A relative
- Someone present at the death
- An official from the hospital
- The person arranging the Funeral

Deaths occurring anywhere else can be registered by:

- A relative
- Someone present at the death
- The person who found the body
- The person in charge of the body
- The person arranging the Funeral

Most deaths are registered by a relative. The Registrar would normally only allow other people if there are no relatives available.

Documents & Information You Will Need

Documents

When registering a death you will need the following:

- Medical Certificate of the Cause of Death

And if available:

- Council Tax bill • Driving Licence • Passport
- Proof of Address
- Birth Certificate • NHS Medical Card
- Marriage / Civil Partnership Certificate

Information you will need to tell the Registrar:

- The person's full name at time of death • Any names previously used (e.g. maiden name) • The person's date and place of birth • Their last address • Their occupation • The full name, date of birth and occupation of a surviving spouse, late spouse or civil partner • Whether they were receiving a State Pension or any other benefit

Tell Us Once

Tell Us Once is a service that lets you report a death to most government organisations in one go.

Tell Us Once will notify: • HM Revenue and Customs (HMRC) • Department for Work and Pensions (DWP) • Passport Office • Driver and Vehicle Licensing Agency (DVLA) • The Local Council • Veterans UK

Documents You Will Receive

If a post-mortem is not being held, the Registrar will issue you with:

- **Certificate for Burial or Cremation (Green Form)**

Given to the funeral director as soon as possible

- **Certificate of Registration of Death (White Form)**

Known as a BD8, this form is for DWP purposes

- **Death Certificate**

A certified copy of the entry into the register

If a post-mortem is being held to determine the cause of death and the deceased is to be cremated the Coroner will issue:

- **Form Cremation 6 Certificate of Coroner**

You will be able to buy one or more Death Certificates at this time; these will be needed by the Executor or Administrator when sorting out the personal affairs.

Other Things That Need To Be Done

Not everything can be done straight away, particularly as this is a very difficult time for people to cope with, but it is important to:

- Make sure everyone who needs to know is told • Arrange to see the deceased's Solicitor and read the Will as soon as possible, this will tell you if there are any special funeral requests and who the Executors are • Start arranging the funeral • Collect all the information and documents you need

Arranging The Funeral

We operate a 24 hours a day 365 days a year personal service.

Our service to you starts as soon as contact is made by yourself, either by telephone or calling in to see us personally.

If the deceased died at home, a Hospice or nursing home we recommend the conveyance of the deceased to our funeral home private chapel.

In some cases the Coroner will require us to convey the deceased to the Coroner's hospital chapel.

At a time to suit you the Funeral Director will discuss all the options available in order to fulfil your personal needs and requirements for the funeral arrangements either in your own home or at our funeral home.

We will take care of, on your behalf, all the necessary paperwork, liaise with doctors, hospitals, ministers, speakers, caterers, florists, newspaper notices etc. as appropriate.

Professional Fees & Disbursements

Professional fees

Professional fees are the charges under the control of the Funeral Director.

These include Funeral Directors attendance to all arrangements, completion of necessary documentation, delivery of the same by hand, telephone calls, home visits and personal supervision of the funeral, the provision of a hearse, a coffin suitable for either cremation or burial.

The conveyance of the deceased to our premises, full preparation hygienic treatment and care of the deceased.

Disbursements

Disbursements are the charges paid out by the Funeral Director on behalf of the family while arranging the funeral.

Examples of these are:

- Cemetery fees • Crematorium fees • Doctors fees
- Parochial fees • Ministers / speakers fees
- Obituaries / acknowledgements • Flowers
- Catering

Help With Funeral Costs

We are not able to guarantee the availability of any social fund funeral payments as every family circumstance will differ.

The social fund may make a contribution towards the cost of a simple funeral within the United Kingdom.

This includes:

- Conveying the deceased to our funeral home Chapel if they died away from home but within the United Kingdom
- Cemetery fees or Cremation fees
- Contribution towards the fees of the Funeral Director
- Doctor's fees

You can get help with the cost of the funeral if you or your partner qualify for one of the following benefits or entitlements:

- Universal Credit/ESA • Pension Credits • Housing Benefits
- Council Tax Benefit • Working Tax Credit which includes a disability or severe disability element • Child Tax Credit at a rate higher than the family element.

Benefit advice about Funeral Payments (payable to the responsible person if in receipt of qualifying benefits) may be obtained from The Social Fund, Tel: 0845 608 8545 during office hours and at www.jobcentreplus.gov.uk.

For advice on Bereavement Benefit (this may be payable to the widow(er)/civil partner if the deceased was Male under 65 / Female under 60 years) Tel: 0800 731 0139.

Any queries regarding Pensions and Allowances can be directed to The Pension Service. Tel: 0800 731 0469 www.thepensionservice.gov.uk

If the deceased was in receipt of a War Pension, you need to telephone the Veterans Agency on Freephone 0800 169 2277 www.veterans-uk.info.

Check if there is any money available from:

- Bank or Building Society accounts of the deceased
- Insurance Death Policies • Charity Grants
- Payments made by a pension scheme or relative
- Savings you have in a bank or building society
- Premium Bonds • National Savings • Cash

Legal Matters

When death occurs, it is very important to ascertain whether or not the deceased has left a Will.

This may contain instructions regarding details of the funeral arrangements, a Will may be with a Solicitor or bank for safe keeping or amongst personal papers.

It is advisable to consult a Solicitor at this time. The solicitor will be able to help with probate, take care of the many issues surrounding the deceased's estate (including the Will, problems of intestacy, Grant of Representation, letters of administration etc).

We are available to help you with advice; we can also recommend a Solicitors practice that on a daily basis can process and administer legal services associated with probate, estates, Wills and other related services.

Vehicles

A Hearse is provided to convey the deceased to the funeral as part of our service, however chauffeur driven limousines are also available.

Staff / Bearers

We provide staff bearers on every occasion, families can also bear if requested.

Viewing The Deceased

Family members often request to see the deceased and pay their last respects in private. The Hygienic treatment, care and attending to the deceased is a priority whether viewing takes place or not. Viewing in our Chapel of Rest is via appointment only and you are welcome to spend as much time as you need to pay your respects.

Close family friends will only be allowed to view on the specific request of the family.

Coffins & Caskets

We provide you with a wide range of burial coffins and caskets and cremation coffins / caskets. The wood and materials used comes from renewable forests, managed on a sustained yield basis. We also supply environmentally friendly coffins these are alternatives to wood coffins made up of wicker, bamboo and wool.

Floral Tributes

Floral tributes are an important part of a funeral.

We are happy to arrange these for you via a local florist who will be pleased to help you choose from a wide variety of different styles, individual designs and seasonal flowers to suit your own personal taste.

Flowers may be sent to our funeral home on the day of the funeral to accompany the hearse to the funeral. Afterwards at your request suitable flowers can be taken to a local nursing home, residential care home, family grave or Hospice.

Newspaper Notices

If you would like to place a death notice or acknowledgment in any local or national newspaper we will be pleased to assist you with the wording and placing of the notice on your behalf.

Stationery / Printing

We are able to arrange printed personalised Order of Service sheets and other printing services are available on request.

Catering For Receptions After The Funeral

We can arrange for you upon request, catering at various venues who are experienced in providing funeral buffets:

- Local venues to accommodate large or small gatherings supplying meals or buffets
- Outside catering to host the funeral buffet at your home or in a Church Hall or Village Hall

Music

At a funeral service music can help reflect the character of the deceased as a reminder of their personality, taste and interests.

A personal favourite piece of music can be uplifting and helpful to you at the funeral.

Cremated Remains

At the time of making funeral arrangements, it is not easy to realise the emotional benefit which can be gained by having somewhere to go, a place that you and your family can go back to, allowing you to pay your respects to your loved one.

It has been acknowledged that this can help with the healing process after the funeral.

The Funeral Director will assist in arranging the interment or scattering of ashes, as soon as possible, or after a period of reflection and consideration.

We can provide an urn or casket for interment in a Cemetery, Churchyard or Crematorium Garden.

Memorials

A memorial stone is not just a marker that is erected over a grave, it is a lasting symbol of remembrance, a way of paying tribute to a life now ended.

We can arrange for new headstones and crematorium memorials.

Existing memorials can be cleaned and extra inscriptions in the same style can be added. Please ask for more details.

Charitable Donations

We will collect if requested donations for a charitable organisation of your choice, record the donations and forward them on your behalf. All donations are recorded.

Special Requirements

If there is a special requirement or desire which will not compromise the dignity of the deceased or occasion please ask.

For example:

- Horse Drawn Hearse (white or black horses)
- Motorcycle Hearse

M.A.Mills
Funeral Service

Incorporating
William Roberts & Sons of Bottesford

Proprietors
Michele & Anthony Mills

Tel: 0115 933 6906

36-38 Main Road, Radcliffe on Trent NG12 2AA

What is a funeral plan?

A funeral plan is an easy way to pre-arrange the funeral you want and pay for the funeral director's services covered by the plan in advance. A plan can help to save your family worry and expense, and help make things easier for your loved ones at what is often a difficult time.

It's a straightforward way to do something amazing for your family. Few people like to talk about their funeral, a funeral plan can make things easier for everyone – so that when the time comes, we will then carry out your plan according to your wishes, relieving your family of the stress and financial worry they may otherwise have to face.

When you get in touch, we will be happy to discuss your funeral requirements and tailor a plan to suit you. Rest assured, our plans are available to everyone, regardless of age or state of health.

A plan that's tailored to your needs

As an independent funeral director, we'll take the time to understand your wishes and tailor a plan to suit you. We will gladly meet you at our premises or in your home at a time that suits you, when it is safe to do so. You can tell us about any preferences you have in mind – the type of funeral you would like to have, hymns, music or any other personal touches – and we'll make sure your plan takes these into account.

Choose how you would like to pay

Spread the cost or make a one off payment. Funeral plans offer a number of ways to pay for your funeral plan – simply choose the one that's right for you.

Looking after you as a customer

As a funeral plan holder, you'll receive personalised plan documents, which include a summary of your plan, your funeral director's details, your plan holder certificate and a personal membership card for you to carry.

Your funeral director will hold full details of your funeral plan. When the time comes, one phone call is all it takes to activate your plan and get the arrangements underway.

[illegible]

Preferred Services Directory

Auctioneers & Valuers

Arthur Johnson & Sons

0115 986 9128

www.arthurjohnson.co.uk

Catering

The Humble Cat

0115 933 2002

Celebrant

Eternal Ceremonies

07305 929423

www.eternal-ceremonies.co.uk

Counselling Services

Ruth Shaw Humanistic Counsellor

07554 217426

www.ruthshawcounselling.co.uk

Estate Agents

Richard Watkinson Partners

0115 933 6666

www.richardwatkinson.co.uk

Florist

The Flower Room

0115 933 2077

www.theflowerroom.co.uk

Funeral Functions

Piano

0115 933 2233

The Manvers Arms

0115 989 3049

House Clearance

Vale Clearances

07931 581740

www.valeclearances.co.uk

Memorial Jewellery

Ashes Into Glass

www.ashesintoglass.co.uk

Memorials

D & M Monumental Masons

0115 920 8756 / 0115 987 1077

www.dandmmasons.co.uk

Natural Burial Ground

Tithe Green Burial Ground

01623 882210 / 07800 635037

www.woodlandburialoxton.co.uk

Solicitors

Curtis Parkinson Solicitors

0800 056 6042

www.curtisparkinson.com

M.A.Mills

Funeral Service

Incorporating

William Roberts & Sons of Bottesford

Auctioneers
& Valuers

Arthur Johnson & sons
AUCTIONEERS

Since
1888

PROBATE & ESTATE SERVICES



Arthur Johnson & Sons have been taking care of family probate valuations for many years, so we understand importance of sensitivity and discretion time. We are able to provide a complete service in the sale and valuation of goods should it be required for the purposes of probate.

Probate Valuation

Upon invitation, our valuation specialist will attend the property and carefully compile a full and detailed inventory. A comprehensive written and digital report will be provided for probate and inheritance tax purposes.

Sale at Auction

We can arrange the collection and transport of items to our auction centre ready for cataloguing, marketing and sale at auction. Our online catalogue is available to bidders worldwide across several platforms to ensure competitive bidding. Information can be found on our website or by contacting us by phone or email.

0115 986 9128 | clientservices@arthurjohnson.co.uk | www.arthurjohnson.co.uk

THE NOTTINGHAM AUCTION CENTRE | MEADOW LANE | NOTTINGHAM | NOTTINGHAMSHIRE | NG2 3GY



Bereavement is such a sad and difficult time, there are so many practical issues to be dealt with; so why not let The Humble Cat take the catering off your mind? We are a locally based company providing a delicious range of freshly prepared buffets, we will try our utmost to simplify arrangements and avoid unnecessary stress.



If you would like to discuss your requirements please get in touch by calling

Victoria on 0115 933 2002 or email victoriatrussler@live.com

11 SHELFORD ROAD, RADCLIFFE ON TRENT, NOTTINGHAM NG12 2AE

Tithe Green

BURIAL GROUND

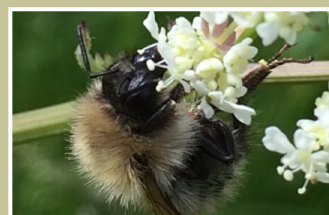
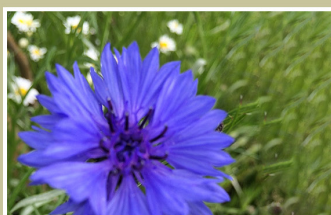
A meadow and woodland
for remembrance

In the heart of the countryside lies a special place of natural beauty and peace

Tithe Green is a natural burial ground which comprises of woodland and wildflower meadow burial plots and memorial trees for the interment of ashes. It is a beautiful, tranquil area of 36 acres of woodland and wild flower meadow. Our ethos is to have minimal environmental impact, emphasizing simplicity whilst promoting a natural landscape.

Tithe Green is approximately 9 miles north of Nottingham City and close to the villages of Oxtun and Calverton.

If you are interested in pre-purchasing a burial plot or have immediate needs for a loved one, please get in touch.



Tithe Green
BURIAL GROUND

Mob: 07800 635037
Tel: 01623 882210

tgelder@tithegreen.com
www.woodlandburialoxton.co.uk



TITHE GREEN BURIAL GROUND | SALTERFORD LANE | CALVERTON | NOTTINGHAMSHIRE | NG14 6NZ

Ashes into Glass®

Cremation Ashes and Crystal Glass



Ashes into Glass® jewellery symbolises eternal love and togetherness. By wearing it or just holding it in your hand, you will connect with your loved one and share special moments together. Each item of jewellery tells a story that is deeply personal to you and will shine with its own character.

For a free ordering pack please contact M A Mills Funeral Service





VALE CLEARANCES

PROPERTY CLEARANCE EXPERTS

- Full House
- Garage / Shed / Loft
- Office / Commercial
- Hoarded Properties
- Libraries / Books
- Collections
- Waste Removal

www.valeclearances.co.uk

07931 581740

valeclearances@outlook.com



Based in Nottinghamshire close to the borders of Lincolnshire and Leicestershire, Vale Clearances are a reputable and professional property clearance and removals company.

Our services are tailor made to meet our customer needs, with everyone treated on an individual and personal basis. We aim to provide a positive experience, sometimes in the most difficult of circumstances, with all team members following our in-house code of conduct whilst proudly sporting uniforms at all times.

Our ethos and principals are an important part of what we do with people, communities and the environment incorporated into our work. Reuse, recycle and redistribute is our moto and we work with some amazing charities, donating goods that truly make a difference.

Clearing a property is never easy, often being a stressful and emotive time. The use of skips is rarely the best option whether that be the cost, the time or simply not wanting to remove a loved one's possessions that way.

Using our services here at Vale Clearances negates all of that giving a more cost effective, ethical and gentle approach. Our vans each carry what would be the equivalent of 2.5 builders skips, with items sorted carefully to fit in with our principles.

On completion of all work, paperwork is provided to evidence correct disposal and transfer of goods with a top tier licence in place with the environment agency.

Do get in touch for a free no obligation quote or informative advice on the best way to move forward with any clearance needs. We really are here to help!



ETERNAL CEREMONIES

IN LOVE... IN LIFE... IN MEMORY...



INDEPENDENT FUNERAL CELEBRANT

As an Independent Celebrant, Jon is not tied down by tradition or religion, he is free to create a Bespoke Ceremony for your loved one which will reflect their life story, their faith, their spirituality and their beliefs.

The ceremony can be held at a crematorium, cemetery or at a natural burial site.

Jon absolutely guarantees that he will listen to the wishes of the family when working on the script for the ceremony.



JON HARRIS
YOUR LOCAL CELEBRANT

It will be written with warmth and if a celebration of life, he will ensure there is space for a smile when remembering your special times together but also room for reflection when saying a fond farewell to your loved one.

Working hand in hand with your Funeral Director, he will ensure you have access to a wide and varied choice of poems, readings, music, songs and hymns for your Order of Service.

Jon will offer his support and guidance through this emotional time and can deliver a ceremony with or without religious/spiritual content or have a mixture of both, it will be reflective of the wishes of you and your family.

Jon would be humbled to have the opportunity to help you through this difficult time and take some of the burden off your shoulders
www.eternal-ceremonies.co.uk · 07305 929423 · jon@eternal-ceremonies.com · [f](#) [t](#) [@](#) Jon Harris - Eternal Ceremonies





Richard Watkinson & Partners is one of the East Midlands most established estate agencies having had a presence in the area for over 30 years. Our experienced and trusted agency has offices across the region specialising in residential and commercial sales as well as lettings.

Following the loss of a relative or friend the value of any land or property will need to be established to finalise their estate. Our friendly and knowledgeable team can assist you, the Executors or Administrator with this process. At Richard Watkinson & Partners, we can provide free probate valuations, carried out in a discreet and sensitive manner. Our dedicated team understand this is a difficult time and we are here to help you and your family.

Tel: 0115 9336666

radcliffeontrent@richardwatkinson.co.uk
www.richardwatkinson.co.uk

34 Main Road, Radcliffe-on-Trent
Nottinghamshire NG12 2FH

Richard Watkinson Ltd. Registered in England. Company No: 07140024.



Ben Mardel - Director

Diana

... for the love of Italy

Fresh, local cuisine for everyone

Funeral Teas catered for
Our family caring for yours



Hot & Cold Food · Locally Sourced · Freshly Made to Order

Our friendly team can work with you to create a menu to meet all of your requirements. All dietary needs can be catered for.

7a, Main Road
Radcliffe on Trent
Nottingham NG12 2FD

t. 0115 933 22 33
e. thecafeplano@gmail.com
f Piano Radcliffe on Trent

Ruth Shaw

Humanistic Counsellor

Helping You Move Forward



Grief & Loss Counselling

It is natural to feel sad following the loss of a significant person in our life. Sometimes, it can be very difficult to adjust to life without that person and we may then put our life on hold, unable to carry on with our normal activities and with our relationships.

I can help you to explore emotional difficulties you are experiencing at a pace suited to you, whilst working with you towards facilitating positive change.

I offer a free initial telephone consultation (20 minutes), in which you can ask me any questions you may have regarding therapy, explore your goals for therapy and discuss whether you feel I am the right therapist for you.

bacp | professional
standards
authority
accredited register
Registered Member 388430
MBACP

Ruth Shaw BA (Hons), MBACP

Please get in touch by emailing, calling
or completing the form on my website

Mobile: 07554 217426
Email: ruthshaw@protonmail.com
www.ruthshawcounselling.co.uk

the flowerroom 
OVER 30 YEARS OF FLORISTRY EXPERIENCE

Respectful & beautiful funeral
flowers & floral funeral tributes



We have a range of flowers including coffin sprays, funeral sheaves and wreaths. We also supply funeral tributes and bouquets. If you cannot find exactly what you are looking for on our website or would like something more unusual please contact Yvonne.

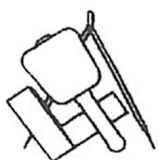
Telephone: 0115 933 2077

Email: enquiries@flowerroom.co.uk
www.flowerroom.co.uk



The Flower Room

THE FLOWER ROOM | 3 SHELFORD RD | NOTTINGHAM | NG12 2AE



D. & M.



Monumental Masons

*for individual memorials designed and carved
by skilled Nottingham craftsmen*

Redhill Cemetery Works
Mansfield Road
Arnold
Nottingham
NG5 8LS
0115 9208756

Carlton Cemetery Lodge
Cavendish Road
Carlton
Nottingham
NG4 3EF
0115 9871077

www.dandmmasons.co.uk | email: dandmmasons@btconnect.com



THE MANVERS ARMS

■■■■■■■■■■ C O T G R A V E ■■■■■■■■■■

Funeral Receptions catered for with care

We can cater for small and large gatherings in our friendly, local pub & restaurant.
Buffets can be tailored to meet all of your requirements.



t. 0115 989 3049
e. cotgravemanversarms@gmail.com
f Cotgrave Manvers Arms

**The Manvers Arms, The Cross
Cotgrave, Nottinghamshire
NG12 3HS**

How Can We Help? Talk to us today.



"Friendly, welcoming, and nothing was too much trouble."

Mrs Robinson & Mrs Davies, client review

We offer straightforward legal advice from our offices across Nottingham in Bingham, Bulwell and Clifton.

Our friendly team is known for going that extra mile, putting their considerable experience into practice to understand and respond to your concerns.

Whatever happens, if you need legal advice or support, please contact us on 0800 056 6042. We're here to help.



Wills, Trusts, Probate
& Power of Attorney

Property
& Conveyancing

Court of Protection,
Deputyship & Welfare

Notary
Services

Dispute & Litigation
Resolution

www.curtisparkinson.com

Freephone 0800 056 6042

Video Appointments

The Sailing Ship

What is dying?

I am standing on the seashore, a ship sails in the morning
breeze and starts for the ocean.

She is an object of beauty and I stand watching her till at last
she fades on the horizon and someone at my side says:

“She is gone.”

Gone where?

Gone from my sight that is all.

She is just as large in the masts, hull and spars as she was when
I saw her, and just as able to bear her load of living freight to its
destination.

The diminished size and total loss of sight is in me, not in her,
and just at the moment when someone at my side says,

“She is gone”

there are others who are watching her coming, and other voices

take up a glad shout:

“There she comes!”

and that is dying.

Charles Henry Brent



M.A.Mills
Funeral Service

Incorporating

William Roberts & Sons of Bottesford

Proprietors
Michele & Anthony Mills

Tel: 0115 933 6906

36-38 Main Road, Radcliffe on Trent NG12 2AA